

# Controlled Lens Motors & Lens Data Encoder



CONFIGURATION OVERVIEW – 4.3.0 / 2020.02

© 2020 Arnold & Richter Cine Technik GmbH & Co. Betriebs KG. All rights reserved. This material is provided "as is" for information purposes only without any warranty. ARRI assumes no responsibility with regard to the performance or use of the products or typographical errors or inaccuracies of given information. Product specifications are subject to change without notice. For a full listing of all available components consult the price list.

## CLM-5 & Accessories



**CLM-5 (Basic Set)**  
K2.0006361



**CLM-5 Motor Unit**  
K2.0006360



**CLM-5/cforce mini Clamp Console 19/15mm,**  
K2.0006176



**CLM-5/cforce mini Gear m0.8/32p, 40t,**  
K2.0003753

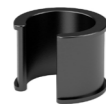


**CLM-5 Motor Cable,**  
K2.0006332

## CLM-5 / cforce mini Accessories



**CLM-5/cforce mini Clamp Console 19/15mm,**  
K2.0006176



**CLM-5/cforce mini Clamp Insert 19/15mm (incl. in K2.0006176)**  
K2.0006175



- CLM-5/cforce mini Gear m0.8/32p, 40t, K2.0003753
- CLM-5/cforce mini Gear m0.8, 40t, 25 mm, K2.0006372
- CLM-5/cforce mini Gear m0.4/64p, 80t, K2.0006367
- CLM-5/cforce mini Gear m0.5, 64t, K2.0006365
- CLM-5/cforce mini Gear m0.6, 56t, K2.0006363
- CLM-5/cforce mini Gear 48p, 60t, K2.0006370

## CLM-4 & Accessories



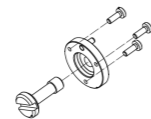
**Controlled Lens Motor CLM-4 (Set)**  
K0.60185.0



**Standard Clamp Console for CLM-3**  
K2.65140.0



**19 mm to 15 mm insert for CLM-4,**  
K2.0002080



**Gear Flange for CLM-4**  
K2.0000244

**CLM-4 Gear assembly with modul 0.8/32 pitch, 50 teeth (incl. metal gear Flange),**  
K2.72108.0

**CLM-4 Gear assembly with modul 0.8/32 pitch, 50 teeth, 25mm extra wide**  
K2.72112.0



**CLM-4 Motor Unit**  
K2.72114.0



**Cable for CLM-4 Motor,**  
K2.72099.0



**CLM-4 Gear Set 0.8, 0.6, 0.5, 0.4,**  
K2.72116.0 (incl. one metal core)



**Standard Clamp Console for CLM-4**  
K2.72101.0



**Clamp Console-2 for CLM-3**  
K2.65141.0



**CLM-4 Clamp Insert 5/8"**  
K2.72115.0

## CLM-4 / cforce plus Accessories



**CLM-4 Rod-to-Rod Adapter 15mm,**  
K2.72106.0



**CLM-4 Rod-to-Rod Bridge Adapter 15mm,**  
K2.72107.0



**CLM-4 Rosette Adapter for Hill Bracket,**  
K2.72113.0



**CLM-4, cforce plus Gear Screw,**  
K2.72127.0

**CLM-4 Gear assembly with modul 0.6, 70 teeth,**  
K2.72111.0

**CLM-4 Gear assembly with 48 pitch, 75 teeth,**  
K2.0002044

**CLM-4 Gear assembly with module 0.5, 80 teeth,**  
K2.72110.0

**CLM-4 Gear assembly with module 0.4/64 pitch, 100 teeth,**  
K2.72109.0

## CLM-3 & Accessories



**Controlled Lens Motor CLM-3 (Set)**  
K0.60057.0



**Clamp Console-2 for CLM-3**  
K2.65141.0



**CLM-3 gear module 0.8/32 pitch, 60 teeth,**  
K2.65142.0

**CLM-3 gear module, 0.8/32 pitch, 60 teeth, 25mm extra-wide,**  
K2.0001256

**CLM-3 gear module 0.6, 84 teeth,**  
K2.0001918

**CLM-3 gear module with 48 pitch, 90 teeth,**  
K2.0002055

**CLM-3 gear module 0.5, 96 teeth,**  
K2.0001914

**CLM-3 gear module 0.4/64 pitch, 120 teeth,**  
K2.000001911



**CLM-3 Motor Unit**  
K2.65143.0



**Cable for CLM-3 Motor,**  
K2.65145.0



**Gear for Cine Lenses Module 0.8, 60 teeth for CLM-3,**  
K2.65142.0



**Standard Clamp Console for CLM-3**  
K2.65140.0



**19 mm to 15 mm inserts for CLM-3 (pair),**  
K2.0002077

## LDE-1 Lens Data Encoder



**Lens Data Encoder LDE-1,**  
K2.0002680



**LDE-1 Cable**  
K2.0003040



**LDE-1 Gear m0.8/32p, 60t,**  
K2.0003036 For standard cine lenses focus/iris/zoom, Panavision focus only.

**LDE-1 Gear m0.4/64p, 120t,**  
K2.0003050 For Panavision iris, Fujinon ENG iris, Canon ENG iris.

**LDE-1 Gear 48p, 90t,**  
K2.0003050 For Panavision zoom.

Lens Type	Focus Gear	Iris Gear	Zoom Gear
CINE	Module 0.8 / 32 pitch	Module 0.8 / 32 pitch	Module 0.8 / 32 pitch
Panavision	Module 0.8 / 32 pitch	Module 0.4 / 64 pitch	48 pitch (no common pitch equivalent)
Fujifilm B4 ENG	Module 0.6 (no common pitch equivalent)	Module 0.4 / 64 pitch	Module 0.6 (no common pitch equivalent)
Canon B4 ENG	Module 0.5 (no common pitch equivalent)	Module 0.4 / 64 pitch	Module 0.5 (no common pitch equivalent)